

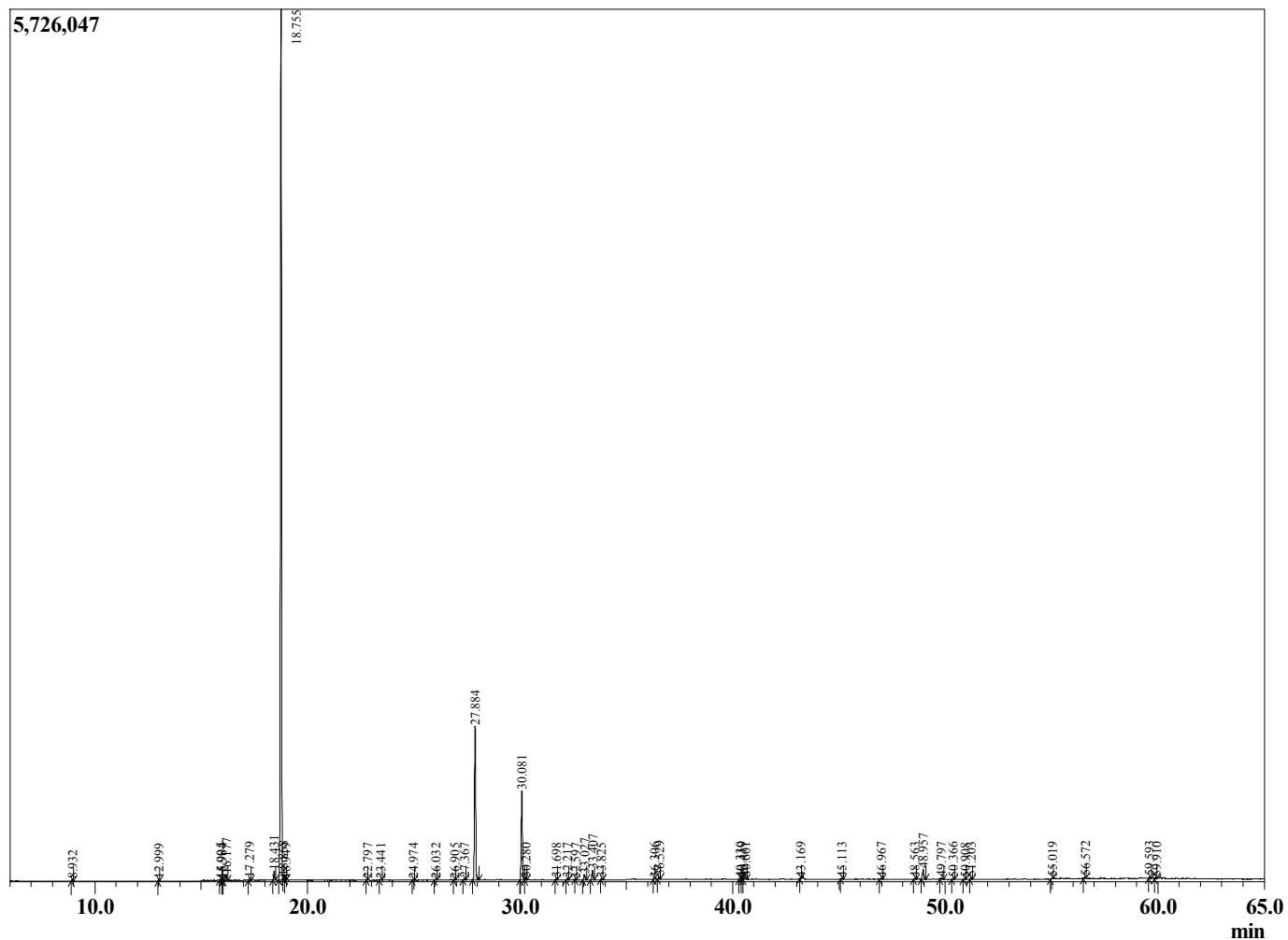
Sample Information

Sample Type : Essential Oil
 Sample Name : Bursera graveolens

Palo Santo
 Lot# ECR9-RT
 Country: Ecuador



Chromatogram Bursera graveolens



R.Time	Name	Area%
8.932	3-Methylcyclopentanone	0.10
12.999	alpha-Pinene	0.07
15.905	Unidentified	0.07
15.984	Unidentified	0.06
16.177	Myrcene	0.46
17.279	alpha-Phellandrene	0.17
18.431	para-Cymene	0.70
18.755	Limonene	71.25
18.858	beta-Phellandrene	0.05
18.949	1,8-Cineole	0.04
22.797	para-Cymenene	0.03
23.441	Linalool	0.09
24.974	trans-para-Mentha-2,8-dienol	0.06
26.032	trans-Limonene oxide	0.10
26.905	Unidentified	0.04
27.367	Menthone	0.06
27.884	Menthofuran	13.92
30.081	alpha-Terpineol	8.19
30.280	cis-Dihydrocarvone	0.08
31.698	trans-Carveol	0.10
32.217	Citronellol	0.10
32.597	Unidentified	0.05
33.027	Pulegone	0.53
33.407	Carvone	0.90
33.825	Geraniol	0.06
36.306	(E)-Anethole	0.05
36.529	Thymol	0.15
40.330	Menthylactone isomer	0.12
40.419	Menthylactone isomer	0.08
40.601	Eugenol	0.18
43.169	Unidentified	0.03
45.113	beta-Caryophyllene	0.07
46.967	Unidentified	0.08
48.563	trans-Cadina-1(6),4-diene	0.09
48.957	Germacrene D	0.99
49.797	Menthylactone	0.19
50.366	(E,E)-alpha-Farnesene	0.13
50.908	gamma-Cadinene	0.10
51.203	delta-Cadinene	0.13
55.019	Unidentified	0.09
56.572	Unidentified	0.11
59.593	Unidentified	0.09
59.910	Unidentified	0.08
		100.00